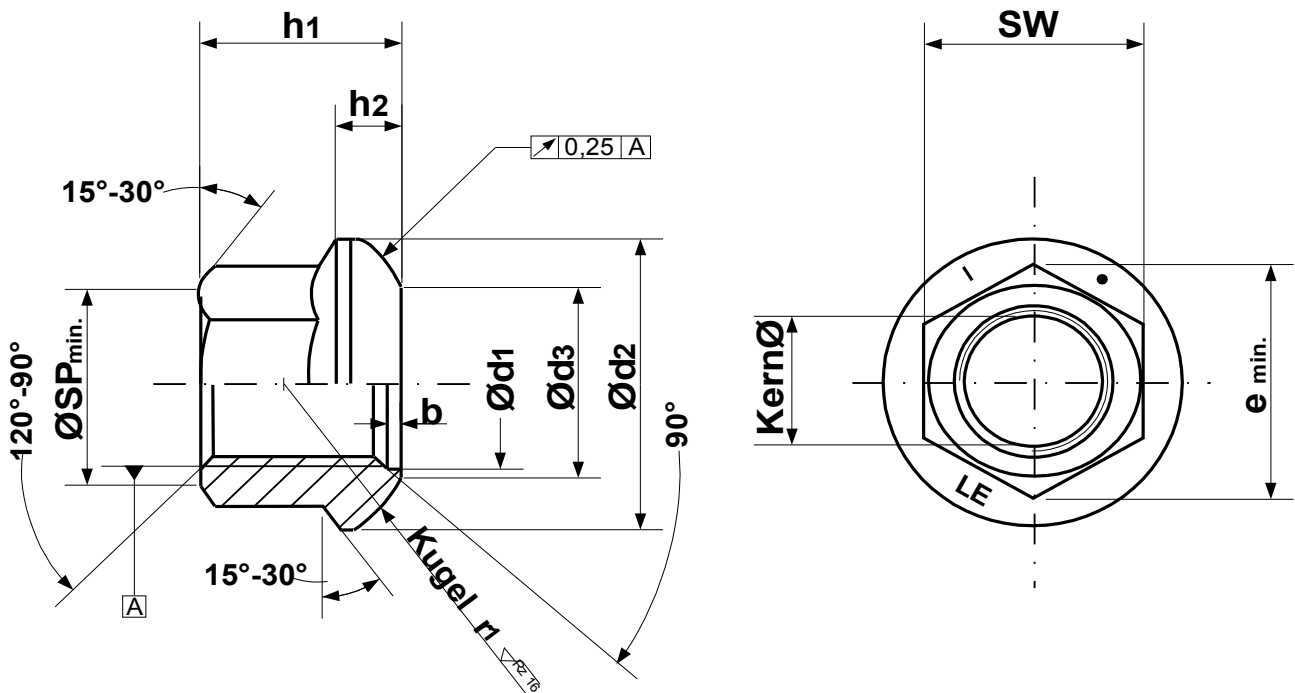


Kugelbundmutter DIN 74 361 Form A A 18 - A 20



Sorte	SW	h1	h2	KernØ	Ød1	Ød2	Ød3	min. ØSP	emin.	b	Kugel r1	Eins.g
												Fertgg.
M 18x1,5	24,00	26,0	8,0	16,676	18,83	28,0	21,0	22,2	26,51	2,0	16,1	63,0 g
	23,67	25,0	7,0	16,376	18,50	27,5	20,5					53,0 g
M 20x1,5	27,00	28,0	9,5	18,676	20,83	33,0	24,5	25,3	29,87	3,5	18,1	88,0 g
	26,67	27,0	8,5	18,376	20,50	32,5	24,0					76,0 g